

Pants and Shorts MEASUREMENTS GUIDE

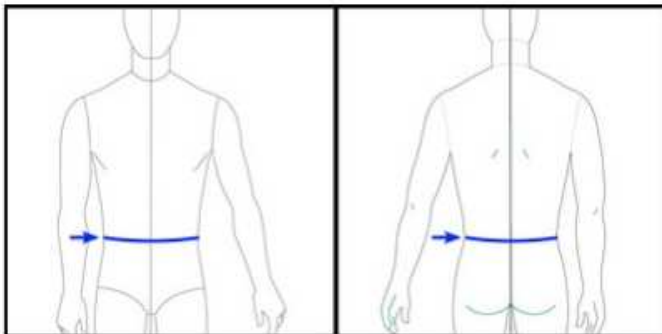
Revised 12/02/2024

IMPORTANT NOTE ABOUT MEASURING

**** Get measured wearing the thickest clothing you would wear under your suit. Don't forget to include weights and/or braces, if you plan to wear them under your suit. If you jump in colder weather, make sure to wear your winter layers while being measured. ****

Questions? Please contact us: support@tonysuits.com or 1-813-851-0043

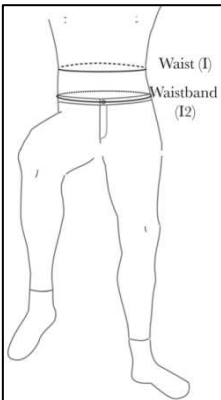
Waist (I)



Measuring Circumference of Torso at Waist Level

Measure around the torso at the level of the waist. This is the narrowest area of your abdomen, generally around the level of the belly button or slightly above it. When measuring, make sure not to suck in your stomach/abdomen, relax and let it hang out.

Waistband (I2)

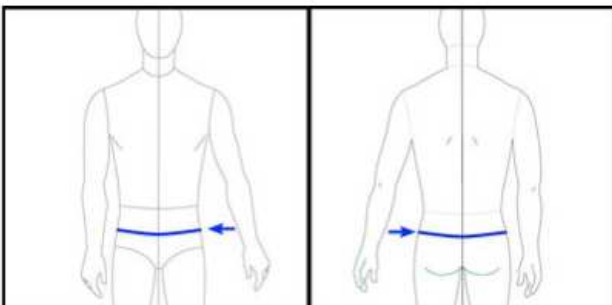


Measure around the torso at the level of your pants.

This is the area where you would wear a belt.

If you wear a belt jumping, measure over the belt.

Upper Hip



Measuring the Upper Hip Circumference

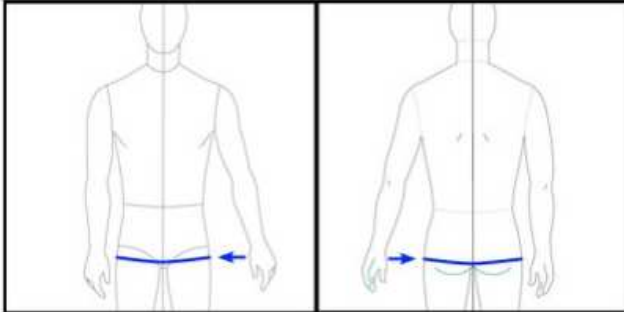
Standing with feet hips-width distance apart, find the tops of the hip bones (iliac crests). Measure around the torso at this level. Keep the tape level and parallel to the ground.

Pants and Shorts MEASUREMENTS GUIDE

Revised 12/02/2024

Remember: Measure over the thickest layer of clothing you want to put on under your suit. Include any belts or braces, if planning to wear under suit.

Lower Hip-Buttocks (J)

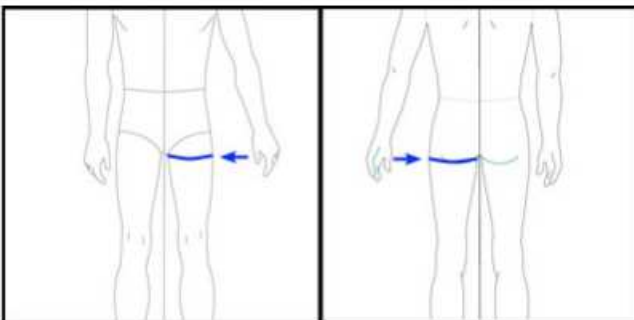


Measuring Circumference of Lower Hip and Buttocks

Remove things from pockets that you don't jump with. Standing with feet hips-width distance apart, find the widest point of the hips and buttocks, often easiest to view from the side of the body. Make sure to include both hips and butt.

Measure around the body at this point, making sure to keep the tape level and parallel with the ground.

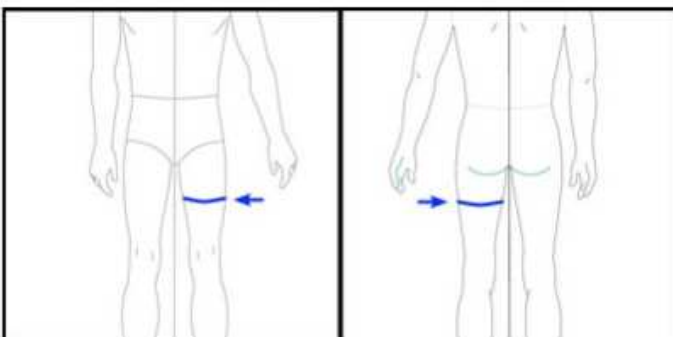
Thigh (K)



Measuring Circumference of Top of Thigh

Holding the measuring tape parallel to the ground, measure around the highest point of the thigh

Mid-Thigh (K2)



Measuring Circumference of the Mid-Thigh

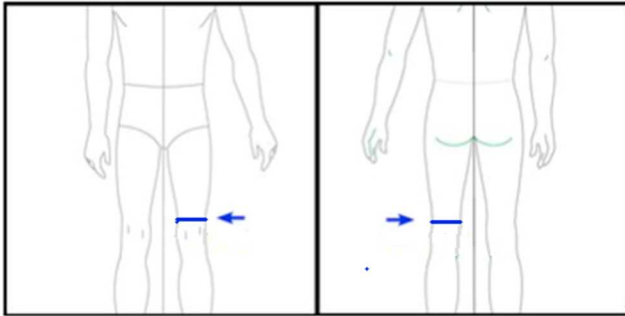
Keeping the measuring tape parallel to the ground, measure around the thigh halfway between the upper thigh and the top of the knee.

Pants and Shorts MEASUREMENTS GUIDE

Revised 12/02/2024

Remember: Measure over the thickest layer of clothing you want to put on under your suit. Include any belts or braces, if planning to wear under suit.

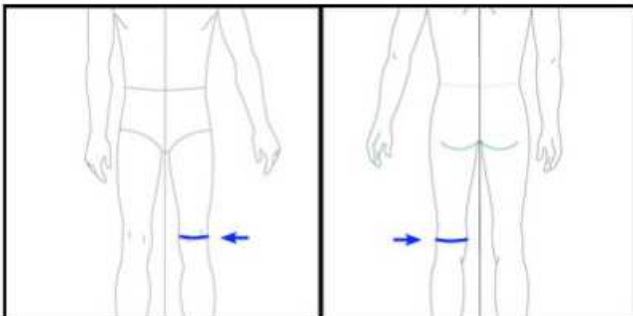
Above Knee, Straight (K3)



Measuring Circumference Just Above Upper Knee, Leg Straight

Standing, with no bend in the knees, hold measuring tape parallel to the ground and measure around the leg at the point just above the knee, above the top margin of the kneecap, at the base of the thigh.

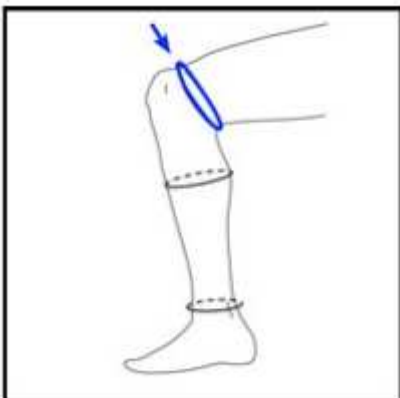
At Knee, Straight (L2)



Measuring Circumference of Knee, Leg Straight

Standing with no bend in the knees, hold measuring tape parallel to the ground, and measure around the knee. Measuring tape should be centered on the kneecap.

Above Knee, 90-Deg Bend (L)



Measuring Circumference Just Above Upper Knee, Leg 90 Bend

Raise the knee up to a 90° angle.
Measure around the leg at the point just above the knee at the base of the thigh.

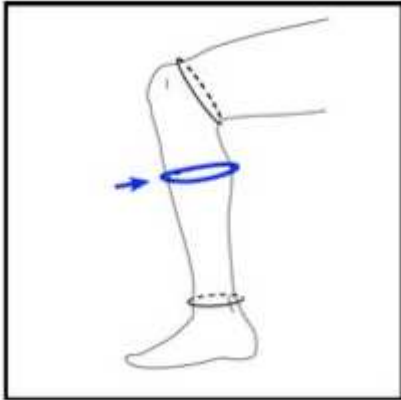
Note: measure the same place as for the above knee, straight (K3) measurement.

Pants and Shorts MEASUREMENTS GUIDE

Revised 12/02/2024

Remember: Measure over the thickest layer of clothing you want to put on under your suit. Include any belts or braces, if planning to wear under suit.

Calf (O)

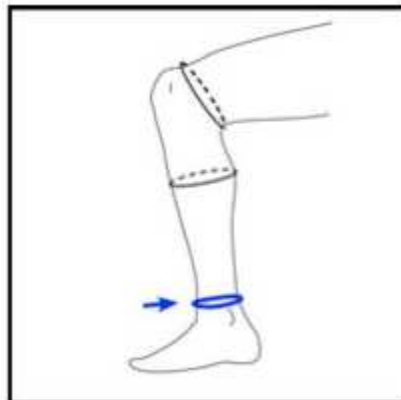


Measuring Circumference of Calf, Flexed

Flex the calf muscle and measure around lower leg at largest point. Make sure to keep measuring tape parallel to the ground.

Measuring tip: lifting the heel will engage the calf muscle.

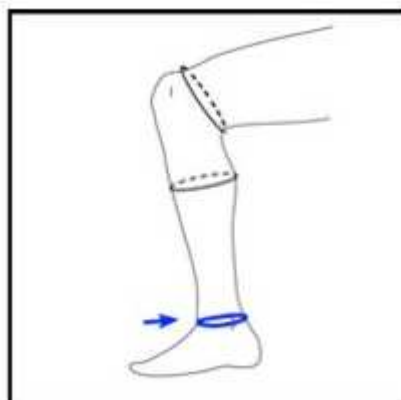
Above Ankle



Measure Circumference of Upper Ankle

Keeping measuring tape parallel to the ground, measure around the leg, just above the ankle bones.

At Ankle, Over Ankle Bone (P)



Measure Circumference of Ankle, Including Ankle Bones

Keeping measuring tape parallel to ground, measure around the ankle, going over the ankle bones.

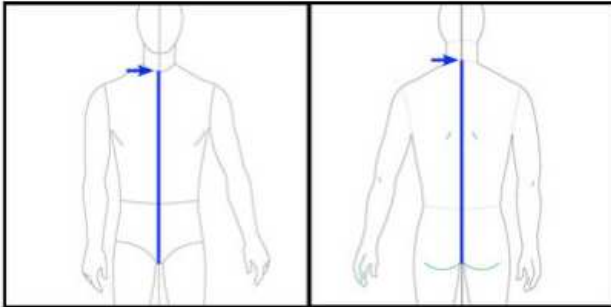
Pants and Shorts

MEASUREMENTS GUIDE

Revised 12/02/2024

Remember: Measure over the thickest layer of clothing you want to put on under your suit. Include any belts or braces, if planning to wear under suit.

Torso Length (Z)

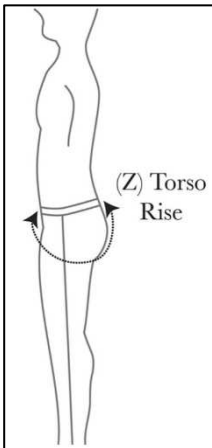


Measure Torso Length, Front and Back, Through Crotch

Stand up straight, look forward, shoulders square over hips

Hold tape measure at bottom of notch at base of neck front, run tape against center line of torso, over stomach and between the legs, going over top of genitals, and then back up to the base of the neck at back (where your collar lies).

Torso Length, Waistband (Short Torso) (Z2)



Measuring Length of Lower Torso from Waistband

How high do you want your pants to go up your torso? This determines the pants' rise.

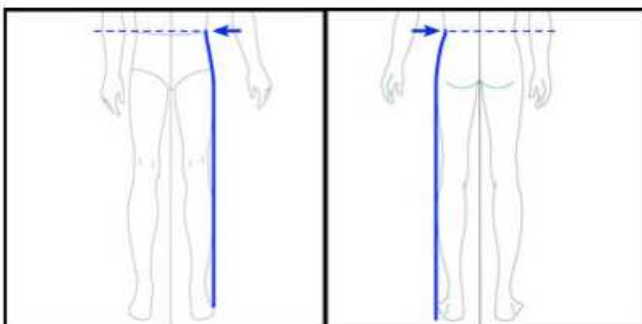
Stand up straight, look forward.

Hold tape measure at your waistband, where you like your pants to lie. Do not suck in stomach for this measurement. Run tape down center line of torso, between the legs, going over the top of genitals, and then back up to the level of the waistband at the back.

Press tape against the body curves without being too tight.

TIP: Wear pants or shorts that are an example of how you want the pants/shorts to fit.

Waist to Floor, Outseam



Measure Length of Lower Body, from Waist to Floor

Wear your jumping shoes. Standing up straight, feet hips width apart, measure vertically from the side of the natural waist, along the body, to the floor.

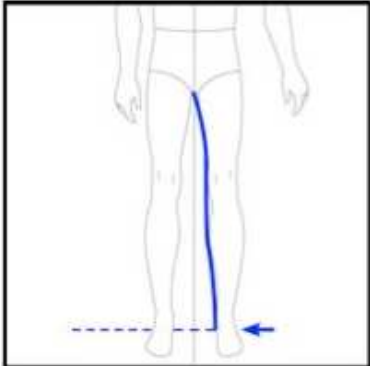
Pants and Shorts

MEASUREMENTS GUIDE

Revised 12/02/2024

Remember: Measure over the thickest layer of clothing you want to put on under your suit. Include any belts or braces, if planning to wear under suit.

Crotch to Floor (N)



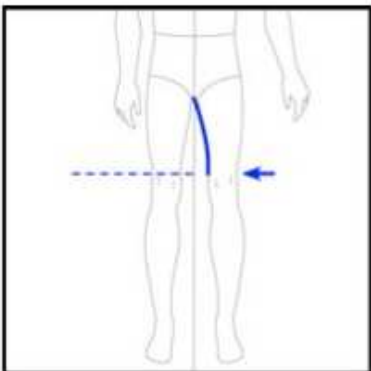
Measure Length of Inseam, from Crotch to Floor

Wearing your jumping shoes, stand up straight, feet hips width apart, shoulders squared over hips.

Hold end of tape against center of crotch (perineum), where all seams meet. Hold tape so that it is touching but not pressing up into the body.

Measure along the side of the leg to the floor, with shoes on.

Crotch to Knee (M)



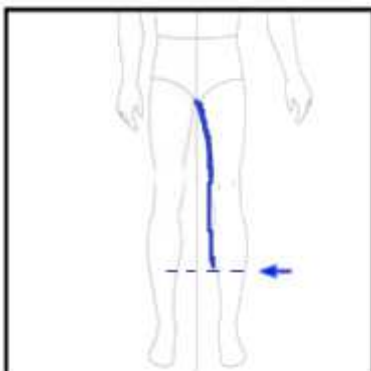
Measure Length from Crotch to Start of Knee

Stand up straight, feet hips width apart and shoulders squared over hips.

Hold end of tape against center of crotch (perineum), where all seams meet. Hold tape so that it is touching but not pressing up into the body.

Measure along the leg to the level of the top of the knee, where the knee cap (patella) begins.

NOTE: this measurement runs along the side of the leg, not straight down.



Measure for the Length of Shorts, from Crotch to Hem

This will be the desired length of shorts.

Tip: the harness of a container will pull the shorts up by about 2-3 inches.

Pants and Shorts MEASUREMENTS GUIDE

Remember: Measure over the thickest layer of clothing you want to put on under your suit. Include any belts or braces, if planning to wear under suit.

The following are needed for Bootie Pants

Shoe Circumference

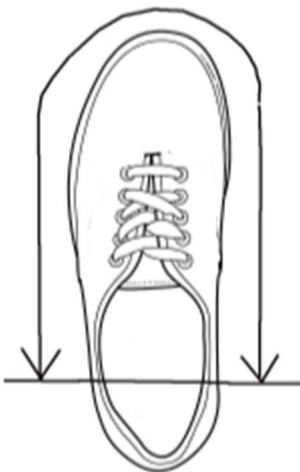


Measure the Circumference of Shoe

Wear the same shoes that are worn for skydiving.
If multiple types of shoes worn, measure the largest shoe.

Measure around the outside of the sole of the shoe.

Ankle Toe Ankle



Measure from Ankle Bone to Toe to other Ankle Bone

Wear the same shoes that are worn for skydiving.
If multiple types of shoes worn, measure the largest shoe.

Starting at one side of ankle at the ankle bone, measure around outside of shoe to toe and back to the other ankle bone.